

# ePDU G3 Platform



Powering Business Worldwide

[www.eaton.eu/ePDUG3](http://www.eaton.eu/ePDUG3)

# Eaton's 3rd generation power distribution technology

The ePDU G3 platform is designed to provide reliable, cost effective power distribution together with highly accurate monitoring and control for IT equipment in the datacentre.

**This industry-leading platform enables you to:**

- Reliably distribute power to your IT equipment
- Accurately monitor and manage power consumption
- Control, configure and update en-masse via management software

**Operate in extreme environments**

The ePDU G3 can be used in 60°C environments and containment solutions

**Prevent accidental disconnect**

- Integrated IEC outlet grip plug retention
- Prevents accidental disconnect from being bumped or from vibration
- Works on any IEC plug

**Simplify load balancing**

Colour coding and laser engraved chassis easily link breakers to outlet groups

**True IEC Class 1 billing grade accuracy**

Monitor your energy consumption (kWhr) plus V, W and A extremely accurately. Monitor ePDU and branch circuit

**Reduce the IP ports needed to monitor your power**

- Daisy-chain up to 4 ePDUs to reduce the cost of networking
- Reduces network infrastructure cost by 75%

**Centrally monitor and manage**

- Easily monitor the status of your power distribution
- Plus optional environmental monitoring

**No downtime on updates**

- Hot-swap eNMC and intelligent firmware
- En-masse configuration and en-masse firmware upgrades available or copy and paste configurations via USB



## Intelligent Power Pod

### Your Business Live 365

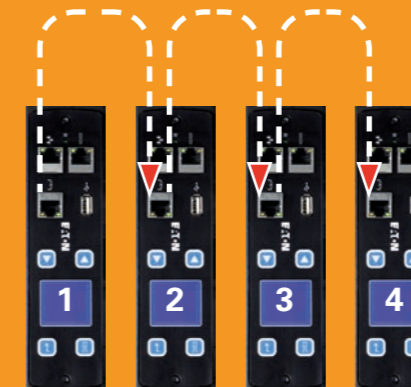
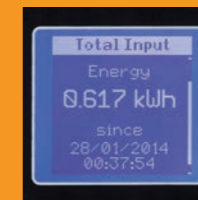
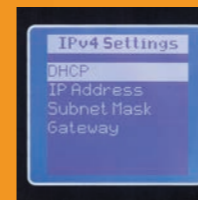
Eaton's ePDUs are part of Intelligent Power Pod,™ an integrated power management system for converged and hyper-converged infrastructure solutions.

The system incorporates power backup, power distribution, power management, housing and support services.

It includes full integration with hypervisors to automate the migration of virtualised equipment and provide the business continuity and resilience you need.

Your converged solution is protected, managed, intelligent and works non-stop.

[www.eaton.eu/live365](http://www.eaton.eu/live365)



**Easily access hot swappable IT equipment**

The ePDU doesn't protrude into the rack and is low profile even at the breakers  
52 x 53mm chassis, and 58.7mm at breakers

**Multiple mounting options**

- Button mount with rear and side mounting options
- Raise or lower the ePDU in the rack to suit your installation
- Unique variable mounting system can be mounted at any point on the ePDU and gives full flexibility



# ePDU G3 Technical Specification

Growing functionality

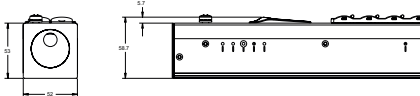
G3 Key technology features	G3 Metered Input	G3 In-Line Metered	G3 Basic
IEC outlet eGrip plug retention	√	N/A	√
±1% IEC class 1 billing grade accuracy	√	√	N/A
Colour-coded outlet and breaker sections	√	√	√
Hot-swap eNMC meter with advanced LCD	√	√	N/A
Low-profile form factor	√	√	√
High operating temperatures	√	√	√
Daisy-chain network	√	√	N/A
Multiple install options	√	√	√
EnergyWise ready	√	√	N/A

G3 Metered Input

G3 In-Line Metered

G3 Basic

Input Type	Outlet Type: Qty	Rating (A)	Breakers	G3 Metered Input	U Height	G3 In-Line Metered	U Height	G3 Basic	U Height
IEC60309 16A 3P	36XC13 : 6XC19	16A 3P		EMIB00	42U			EBAB00	36U
IEC60309 32A 3P	3XC13 : 6XC19	32A 3P	6 single pole					EBAB01	36U
C14	8XC13	10						EBAB02	10U/19"
C14	16XC13	10		EMIB03	24U			EBAB03	16U
IEC60309 16A	20XC13 : 4XC19	16		EMIB04	24U			EBAB04	24U
IEC60309 32A	20XC13 : 4XC19	32	2 single pole	EMIB05	26U			EBAB05	24U
IEC60309 32A	12XC13 : 4XC19	32	2 single pole	EMIB06	24U				
IEC60309 32A 3P	6XC13 : 12XC19	32A 3P	6 single pole	EMIB07	36U				
IEC60309 32A	36XC13 : 6XC19	32	2 single pole	EMIB08	36U				
C20	18XC13 : 2XC19	16		EMIB09	24U				
IEC60309 16A	18XC13 : 2XC19	16		EMIB10	24U				
IEC60309 32A 3P	6XC19	32A 3P	6 single pole	EMIB11	24U			EBAB11	36U
IEC60309 32A 3P	12XC13 : 12XC19	32A 3P	6 single pole	EMIB12	36U				
IEC60309 16A	1XIEC60309 16A	16				EILB13	10U/19"		
IEC60309 32A	1XIEC60309 32A	32				EILB14	10U/19"		
IEC60309 32A 3P	1XIEC60309 32A 3P	32 3P				EILB15	10U/19"		
IEC60309 32A	20XC13 : 2XC19 : 2XUK	32	2 single pole	EMIB16	26U				
IEC60309 32A	20XC13 : 2XC19 : 2XFR	32	2 single pole	EMIB17	26U				
IEC60309 32A	20XC13 : 2XC19 : 2XGE	32	2 single pole	EMIB18	26U				
C14	12XC13	10						EBAB19	10U/19"
C20	16XC13	16						EBAB21	16U
C20	20XC13 : 4XC19	16						EBAB22	24U



#### Low profile at breakers:

ePDU Dimensions: 52mm width, 53mm deep (58.7mm at breakers).  
Technical drawings and pictures available on [Eaton.com/ePDUG3](http://Eaton.com/ePDUG3).



#### Accessories

Environmental monitoring (Temperature and Humidity Probe) available separately. Part number EMP001.

## Need Something Special?

- Dedicated engineering teams in 3 centres of excellence are available to create your perfect ePDU.
- Specific configurations or complete engineering projects.
- Including national socket types, UK, French, Din/Schuko – including combinations of up to 3 types of outlet on an ePDU.

[www.eaton.eu/ePDUG3](http://www.eaton.eu/ePDUG3)

**Eaton**  
**EMEA Headquarters**  
Route de la Longeraie 7  
1110 Morges  
Switzerland

© 2014 Eaton  
All Rights Reserved  
Printed in EU, 05/14  
Publication No.  
ePDUG3-Brochure RevB,  
August 2014

Eaton is a registered trademark.

All other trademarks are property of their respective owners.

**EATON**  
Powering Business Worldwide