

Package Contents

- Mounting bracket
- RJ45 couplers (2)
- RJ45 cables (2)
- M3 x10mm pan head screws (6)
- T6 Torx security screw
- *AP-220-MNT-W3 Drill Template*
- *AP-220-MNT-W3 Mount Kit Installation Guide* (this document)

Introduction

The AP-220-MNT-W3 Mount Kit offers a secure mounting solution for 220 Series access points. This mount kit attaches to standard single and dual gang wall boxes, or mounts to a flat surface, such as a wall or ceiling.

Installing the AP-220-MNT-W3 Mount Kit

Refer to the steps below for installing your AP-220-MNT-W3 Mount Kit.

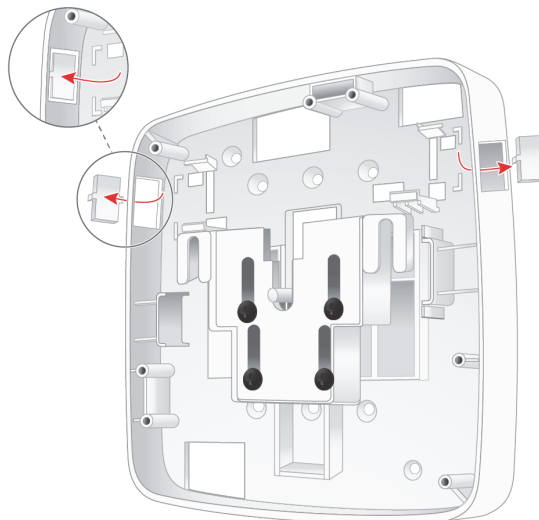


To install the AP-220-MNT-W3 onto a flat surface, see [Installing the AP-220-MNT-W3 to a Flat Surface](#). To install the mounting bracket onto a wall box, see [Installing the Mount Housing onto a Wall Box](#).

Installing the AP-220-MNT-W3 to a Flat Surface

1. (Optional) Remove one or both punch-out panel(s) on the sides of the mounting bracket by pressing firmly, as shown in [Figure 1](#).

Figure 1 Removing the punch-out panels from the mounting bracket



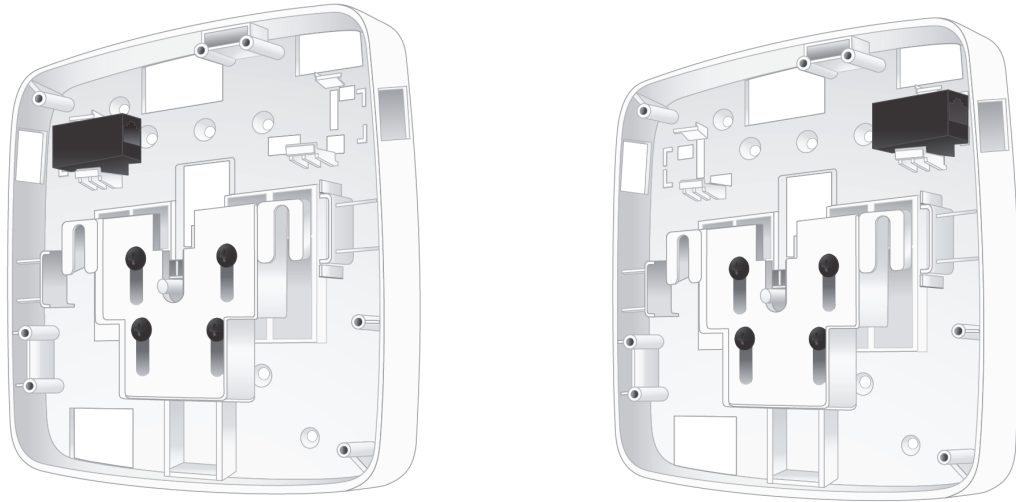
2. Tape the *AP-220-MNT-W3 Drill Template* to the desired location and drill holes where indicated by the template.
3. Once the holes have been drilled, remove the drill template and position the mounting bracket flat against the surface. Align the holes of the mounting bracket with the pre drilled holes, then screw the housing into place.



Screws for step 3 are not included in this kit and may vary depending on the surface type.

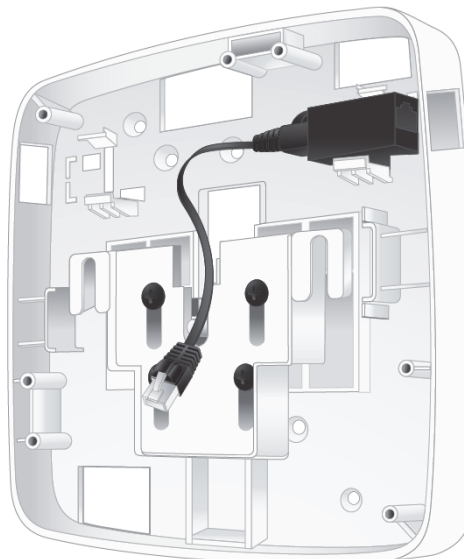
4. Press the RJ45 coupler(s) into the housing(s) located in the upper corner(s) of the mounting bracket until locked into place in the housing(s), as shown in [Figure 2](#).

Figure 2 *Attaching the RJ45 couplers to the mount*



5. Remove the RJ45 cable(s) from the bag and insert the end(s) into the inner-facing port(s) of the couplers. See [Figure 3](#).

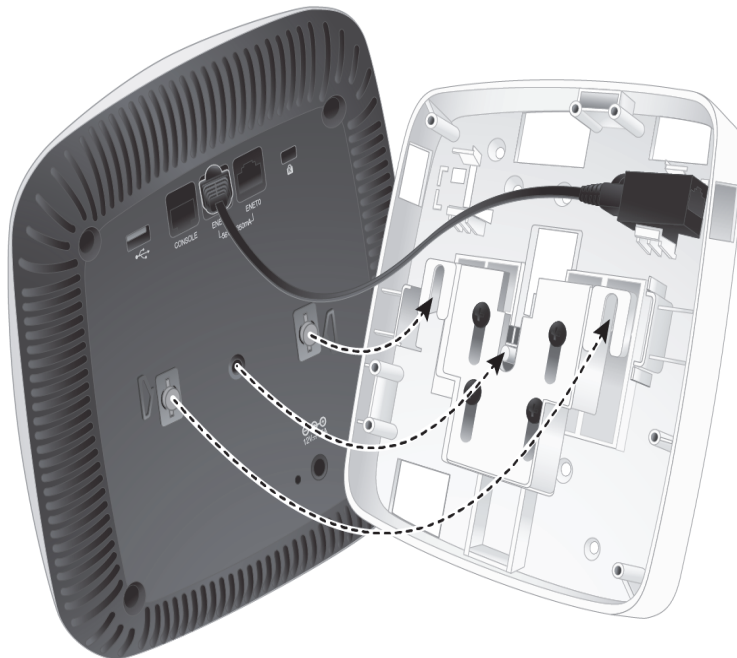
Figure 3 *Inserting the RJ45 cables into the coupler*



6. Connect the opposite end(s) of the RJ45 cable(s) to the ENET0 and/or ENET1 port(s), located on the back of the access point.

7. Once the RJ45 cable(s) are attached, align the pins on the rear panel of the access point with the slots on the mounting bracket. Press the button on the bottom of the mounting bracket and slide the access point into the bracket. Release the button to secure the access point to the mounting bracket, as shown in [Figure 4](#).

Figure 4 *Securing the access point to the mounting bracket*



8. To lock the access point to the mounting bracket, insert the T6 Torx security screw into the hole beside the button, located at the bottom of the mount, then tighten the screw until it is snug.
9. After the access point is securely fastened to the mounting bracket, connect the Ethernet cable(s) to the appropriate RJ45 coupler port(s) on either side of the mount.

Installing the Mount Housing onto a Wall Box

1. Align the holes on the mounting bracket with the corresponding holes on the wall box. To install this kit to a single gang wall box, refer to [Figure 5](#). To install this mount kit to a dual gang wall box, refer to [Figure 6](#). Then, using the 10mm machine screws, fasten the mount housing to the wall box using the holes indicated.

Figure 5 *Installing the mounting bracket to a single-gang wall box*

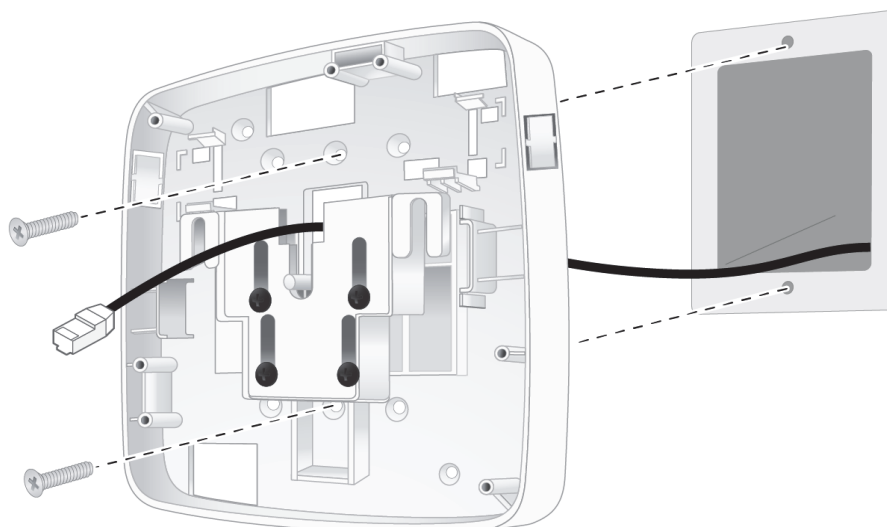
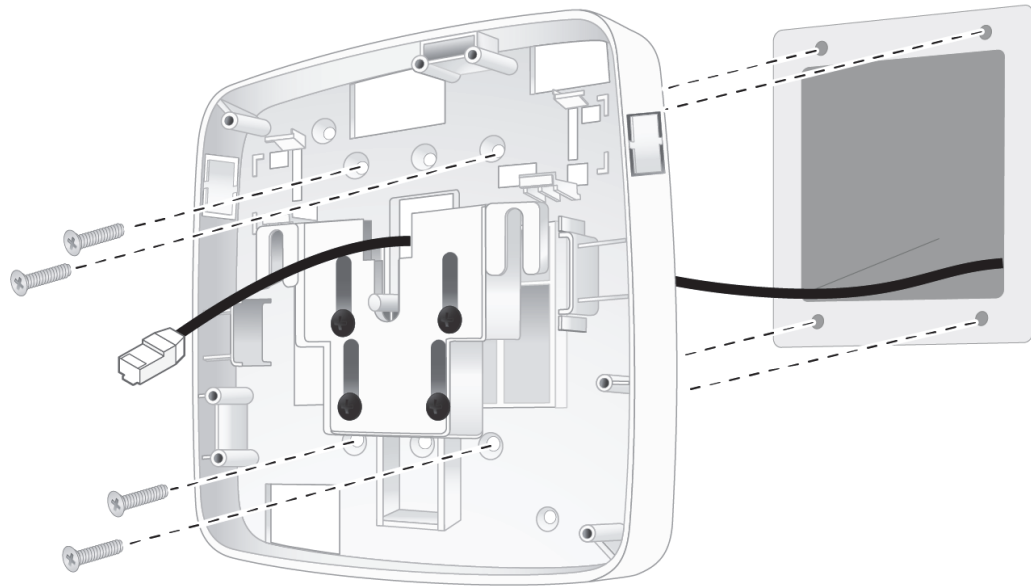
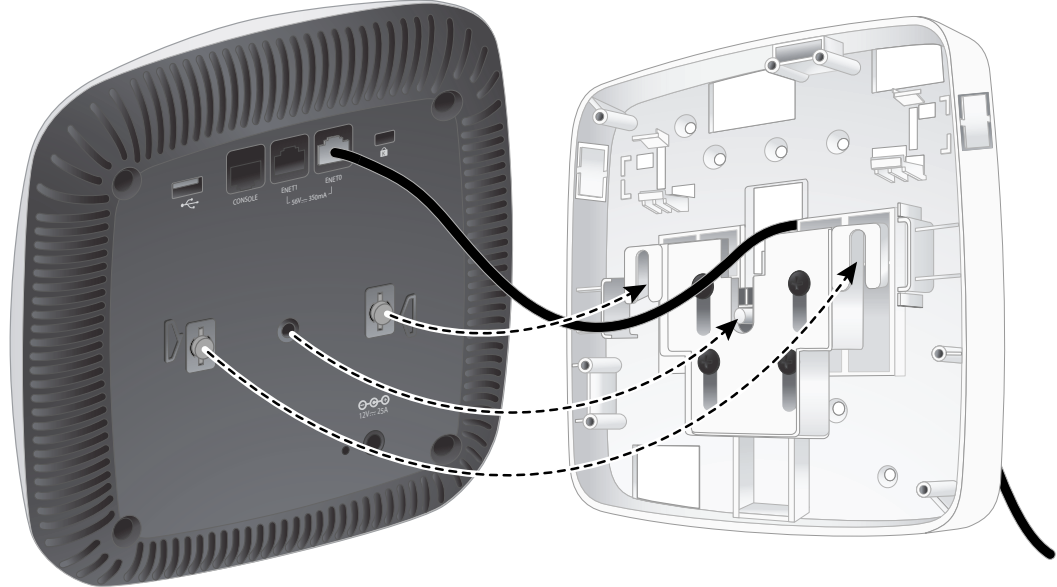


Figure 6 Installing the mounting bracket to a dual-gang wall box



2. Route Ethernet cable(s) through the back of the mount housing, as shown in [Figure 5](#) and [Figure 6](#). Connect the cable(s) to the ENET0 and/or ENET1 port on the back of the access point.
3. Once the cable(s) is/are connected to the access point, align the pins on the rear panel of the access point with the slots on the mount housing. Press the button on the bottom of the mount housing and slide the access point into the slots. Release the button to secure the access point to the mounting bracket. See [Figure 7](#).

Figure 7 Securing the access point to the mounting bracket



4. To lock the access point to the mounting bracket, insert the T6 Torx security screw into the hole beside the button, located at the bottom of the mount, then tighten until the screw is snug.



0511857-01