

Flip Pro WMB Interactive Display

LH75WMBWLGCXXY (75")
LH85WMBWLGCXXY (85")

Top line key features / benefits

1. Fast and Multi-Touch
2. Intuitive Pen and Brush Mode
3. Versatile Connectivity
4. 3-in-1 USB-C Port
5. SmartView+
8. Workspace
9. Protective Screen Technology
8. Video Call Application
9. Remote Content Push
10. Advanced Hardware
11. Smart Design
12. AirPlay2
13. OPS Slot
14. Boxlight MimioConnect

Key Features



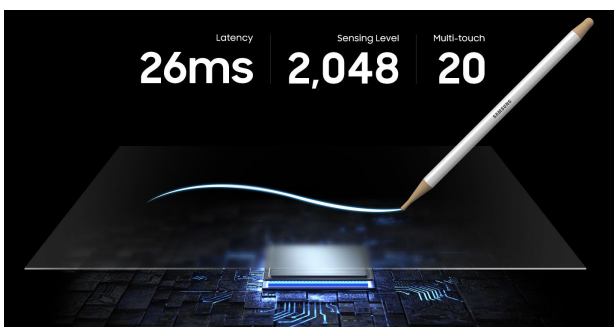
Incredible learning possibilities

As digitalisation of education accelerates to enable impactful, interactive collaboration, Flip Pro gives educators the tools needed to deliver a wide range of learning methods. With versatile connectivity, intelligent software and intuitive features, Flip Pro introduces the future of education.

Collaborate with multi-touch

Fast and Multi-Touch

Flip Pro delivers incredible latency at just 26ms, with prediction logic applied that helps ensure a realistic, smooth drawing experience with 2,048 points of pressure built directly into the display to unlock creativity¹. Plus, Flip Pro enables Multi-Touch for up to 20 people for collaborative interactivity.



DISCLAIMERS

1. When using single touch.

Key Features



Bring ideas to life

Intuitive writing and drawing with Pen and Brush Mode

Ideas can be brought to life on Flip Pro with pen and brush mode that helps provide a real-world writing experience, while flexible erasing requires just a swipe of your finger or palm. The quick tool and palette menu ensure creativity flows and toggle button easily enables a new note layer UI.

Stay connected

Versatile Connectivity

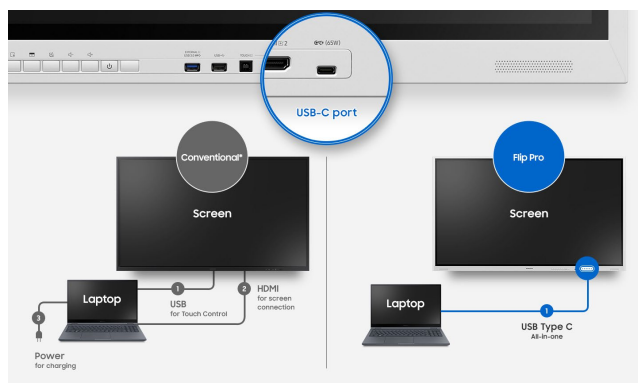
Flip Pro provides multiple connectivity options, including USB, HDMI, DP and OPS slot. Educators can easily connect their device to access content and display information on a larger screen, as well as connect to network and other devices through LAN port and wireless screen-mirroring¹.



One single port for three functions

3-in-1 USB-C Port

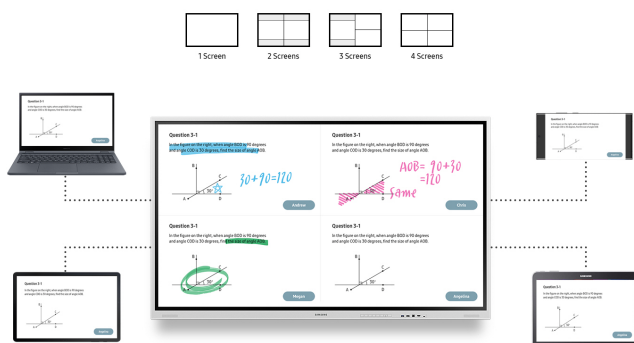
Connectivity is enhanced with 3-in-1 USB-C connectivity², enabling screen mirroring, touch control and external device charging (max. 65W). Educators can simply connect to the USB Type-C port, helping them to deliver interactive and engaging lessons with minimal hassle.



Smart, wireless sharing from multiple from devices

SmartView+

With SmartView+, up to 50 devices can be simultaneously connected to the interactive display wirelessly, in addition to enabling multi-view on up to four screens. This cable-less screen sharing functionality is ideal for larger meeting rooms as well as digitised classrooms.



DISCLAIMERS

Images simulated for illustrative purposes.

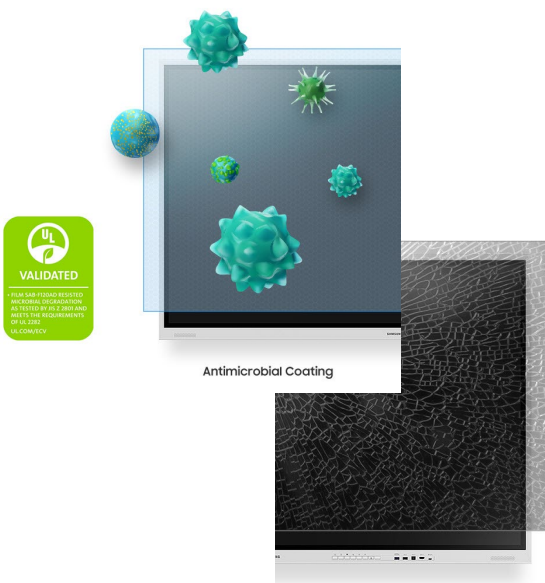
1. External device must have corresponding I/O capabilities
2. When compared to previous Flip models.

Key features



Access whatever you need, from anywhere Workspace

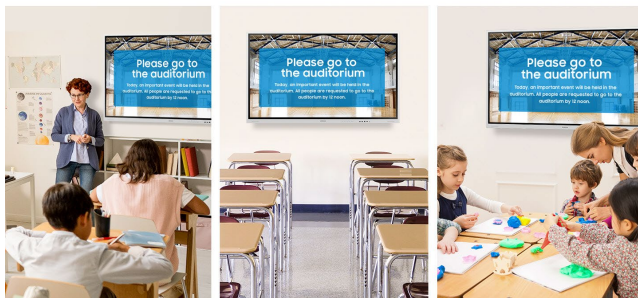
With Workspace secured by Knox, Flip Pro enables users to easily access remote PC, network drive and other third-party applications such as Office 365, VMWare, Boxlight MimioConnect¹. This helps to support efficiency from any location and a streamlined workflow for educators and students.



Clean screen and minimised damage risk

Protective Screen Technology

Samsung Flip Pro helps to deliver peace of mind with a built-in Antimicrobial Coating² which assists in minimising microbial growth. Plus, the Flip's display is wrapped in a proprietary shatter protection film, which helps to ensure the screen stays intact in the event of a break.



Collaborate with ease over video conferencing

Video Call Application³

Simple, seamless video conferencing is supported on Flip Pro based on the WebRTC (Real Time Communication) API, without the need for additional solution compatibility. Apps such as Google Duo will be available to users with just a touch for easy, efficient collaboration.

DISCLAIMERS

1. Available apps may vary by region and require service subscription.
2. To perform its antibacterial function, this product has been treated with the biocidal substance Silver phosphate glass. Antibacterial property does not protect users against bacteria and provides no protection against viruses including Covid-19. Antimicrobial Coating is on surface of screen only and the effect may vary depending on conditions of use. Antibacterial certification: UL2282 which is granted when the antibacterial effectiveness is more than 99%. (Test method (JIS Z 2801): after inoculation of 0.4cc of liquid with bacteria (Escherichia coli and Staphylococcus aureus) on specimen (5cm x 5cm), a sterilized film (4cm x 4cm) is adhered and left in a thermo-hygrostat with a relative humidity of 90% or more at 35°C for 24 hours, and then the efficiency of killing of the bacteria is measured / Test agency: KOTITI Testing & Research Institute)
3. Google Duo compatibility available from Q2. Images & on-screen contents are simulated and for illustration purpose only. Webcam is sold separately. Supported webcam (9 models): Logitech C930e, C922, C922x, C925E, C920s, C920, C920-C, C930C, Logitech Stream Cam

Key features



Keep informed with remote management solution

Remote Content Push

Using Samsung's MagicINFO Remote Management solution, Flip Pro offers new functionality that pushes content, alerts and warnings from the school information system to the display, notifying teachers and students of important updates which can be pushed directly to Flip displays in every classroom¹.

Engage students in optimised learning environments

Advanced Hardware

With a 4.0 Ch 40W speaker, made up of two front and back 10W speakers, Flip Pro helps ensure ample sound transmission. Plus, an ambient light sensor helps to optimise brightness according to external light conditions, while the Flip's upgraded RAM (3.5G) and storage (32GB) delivers powerful SoC performance.



Carefully designed for comfortable use

Smart Design

Flip Pro is designed specifically for education with a rear handle for easy moving², as well as a front control panel for quick access. In addition, the elegant, light grey colour makes the Flip a comfortable additional to a variety of different environments.



Share with AirPlay 2

AirPlay 2

Flip Pro is integrated with AirPlay 2, allowing educators and students to present on the big screen, to support visibility and engagement in larger spaces. Creating a wireless dual display setup helps to ensure students are properly receiving information, as well as opening opportunities for more collaborative interactions.



DISCLAIMERS

1. Requires MagicINFO license to use this service and SIS(School Information Service) should separately built and integrated with Magic INFO.
2. Requires separate standing mount to move which must be purchased separately.

Key features



Use your favourite third-party education solutions

OPS Slot

With OPS (Open Pluggable Specification) slot¹, Flip Pro enables educators to use their third-party education solutions, allowing them to deploy school information systems(SIS), learning apps and tools.



Optimise lesson planning with embedded learning solution

Boxlight MimioConnect²

Flip Pro offers the MimioConnect app, an online blended learning platform, providing an extensive catalog of versatile learning content available via Workspace. Samsung's partnership with leading US education solutions delivers education software directly.

DISCLAIMERS

1. OPS module sold separately.
2. Requires Boxlight registration and subscription to use this service and the service availability varies by region.

Model		Flip Pro (WMB)		
SKU		LH75WMBWLGXXY	LH85WMBWLGXXY	
EAN		8806094287059	8806094286526	
Panel	Diagonal Size	75"	85"	
	Type	New Edge, 60Hz	New Edge, 60Hz	
	Resolution	3,840 x 2,160 (Landscape)	3,840 x 2,160 (Landscape)	
	Brightness(Typ.)	350cd/m2 (without glass)	350cd/m2 (without glass)	
	Contrast Ratio(Typ.)	16.7M	16.7M	
	Viewing Angle(H/V)	178:178	178:178	
	Response Time(G-to-G)	6ms(Typ.)	6ms(Typ.)	
Sound	Operation Hour	16/7	16/7	
	SpeakerType	Built in Speaker (40W x 4CH)	Built in Speaker (40W x 4CH)	
Connectivity	INPUT	RGB	N/A	
		VIDEO	HDMI 2(Rear1, Front1), DP1, USB C(Front), OPS I/F	
		AUDIO	N/A	
	OUTPUT	USB	2(For SoC, Rear/Front), 1 (for external 3.0x1(Front))	
		RGB	N/A	
		VIDEO	N/A	
	INTERNAL	AUDIO	1(Stereo Mini Jack)	
		Touch Out	Touch Out 2 (USB Upstream Type, Front 1, Rear1)	
	EXTERNAL	SENSOR	N/A	
		CONTROL	Touch Input RS232C thru stereo jack, RJ45(For MDC)	
Touch	BT/WIFI	Yes (Keyboard/Mouse, Speaker)	Yes (Keyboard/Mouse, speaker)	
	Type	IR	IR	
	# of Drawing	20 touch (internal/external) * Whiteboarding app works 4 drawing	20 touch (internal/external) * Whiteboarding app works 4 drawing	
	Touch Pen Type	Passive Pen with magnet	Passive Pen with magnet	
	Object Recognition Range	2mm/ 4mm / 8mm / 50mm (Brush Mode : Dynamic Object Recognition)	2mm/ 4mm / 8mm / 50mm (Brush Mode : Dynamic Object Recognition)	
	Touch Response Time	6.7ms	6.7ms	
	Drawing Speed (Touch latency)	26ms	26ms	
	Haze	8%~12%	8%~12%	
	Thickness	3.2T	3.2T	
	Hardness	Heat Semi-Strengthened Glass	Heat Semi-Strengthened Glass	
Additional Film	AG Flim(Anti glare)	AG Flim(Anti glare)	AG Flim(Anti glare)	
	Hydrophobic Coated PET (Shatter-proofflim) Antimicrobial Coating	Hydrophobic Coated PET (Shatter-proofflim) Antimicrobial Coating	Hydrophobic Coated PET (Shatter-proofflim) Antimicrobial Coating	
Power	Type	Internal (Main 1ea, OPS1ea)	Internal (Main 1ea, OPS1ea)	
	Power Supply	AC100-240V 50/60Hz	AC100-240V 50/60Hz	
	Power Consumption	Max[W/h]	473W(100-240V), 451W(220-240V), OPS(16V/4.5A)	528W(100-240V), 506W(220-240V), OPS(16V/4.5A)
		Typical[W/h]	187W	197W
		Rating[W/h]	430W(100-240V), 410W(220-240V), OPS(16V/4.5A)	480W(100-240V), 460W(220-240V), OPS(16V4.5A)
Stand-by[W/h]		0.5	0.5	
BTU[W/h]	1612.93W(100-240V), 1537.91W(220-240V), OPS(16V/4.5A)	1800.48W(100-240V), 1725.46W(220-240V), OPS(16V/4.5A)		
Mechanical Spec	Dimension (mm)	Set	1724 x 1026.3 x 89	
		Package	1905 x 1189 x 287	
	Weight (kg)	Set	59.3	
		Package	72.2	
	Colour	White grey	White grey	
	VESA Mount	400 * 400	600 * 400	
	Protection Glass	Yes	Yes	
	Stand Type	Wall Mount	Wall Mount	
	Media Player Option Type	OPS Slot support	OPS Slot support	
	Rotation	Landscape only	Landscape only	
Power Cable Length	3M / 2.4M(US)	3M / 2.4M(US)		
Operation	Accessory	Power Cord, USB Upstream Cable(2ea), Pen(2ea, Black), OPS Box, Warranty/QSG	Power Cord, USB Upstream Cable(2ea), Pen(2ea, Black), OPS Box, Warranty/QSG	
	Operating Temperature	0°C~ 40°C	0°C~ 40°C	
Feature	Humidity	10 ~ 80%, non-condensing	10 ~ 80%, non-condensing	
	Key	Flip App	Flip App	
	Orientation	Landscape	Landscape	
	H/W	Touch Overlay(IR), Front Connectivity, OPS I/F Support(w/OPS Box) Built in Speaker(40W 4CH), WiFi/BT Module Embedded	Touch Overlay(IR), Front Connectivity, OPS I/F Support(w/OPS Box) Built in Speaker(40W 4CH), WiFi/BT Module Embedded	
		Flip S/W (whiteboardingapp)	Flip S/W (whiteboardingapp)	
	S/W	Document viewer	Document viewer	
		SmartView+	SmartView+	
		Video player	Video player	
		Web browser	Web browser	
		Smsung workspace	Smsung workspace	
(RDP/VNC, Office365, VMWare)		(RDP/VNC, Office365, VMWare)		
Edu tool	Edu tool			
mimioconnect(N.America Only)	mimioconnect(N.America Only)			
WebRTC	Yes	Yes		
Upgradableweb engine	Yes	Yes		
SmartView+	Yes	Yes		
Internal Player (Embedded H/W)	Airplay	Ready to update ('22.5)	Ready to update ('22.5)	
	Platform	Pontus-M (Tizen 6.5)	Pontus-M (Tizen 6.5)	
	Processor	Cortex A72 1.7GHz Quad-Core CPU 2M8L2	Cortex A72 1.7GHz Quad-Core CPU 2M8L2	
	Storage	32GB (2.65GB Occupied by O/S, 29.35GB Available)	32GB (2.65GB Occupied by O/S, 29.35GB Available)	
Security	Operating System	Tizen 6.5 : Samsung Proprietary OS(VDLinux)	Tizen 6.5 : Samsung Proprietary OS(VDLinux)	
	802.1x(WPA2 Enterprise) : EAP-TLS, EAP-TTLS, EAP-PEAP	802.1x(WPA2 Enterprise) : EAP-TLS, EAP-TTLS, EAP-PEAP		
Accessories	Included	Power Cord, USB Upstream Cable(1ea), Pen(2ea), Warranty/QSG N/A (3rd party company stand can be supported through VESA)	Power Cord, USB Upstream Cable(1ea), Pen(2ea), Warranty/QSG N/A (3rd party company stand can be supported through VESA)	
	Optional	Stand	WMBN8200SF	
		Mount	WMBN8200SF	
3rd party compatibility	OPS Box	CY-PBRK200		
		Logitech RallyBar Plus	Logitech RallyBar Plus	