



## WAD eboard Interactive Display

LH86WADWLG CXXY (86")

LH75WADWLG CXXY (75")

LH65WADWLG CXXY (65")

### Top line key features / benefits

1. Familiar Android™ OS
2. Access to Google services
3. Multi-Screen Modes for easy multitasking
4. Wireless Screen Sharing
5. Collaborate with Multi-Touch
6. Switch colours with Dual Pen
7. 3-in-1 USB-C Port for convenient connectivity
8. Front Facing Speakers
9. HDMI Out Connection for accessible content
10. Connect with Open Pluggable Specification
11. Remote Device Management Solution
12. Deliver messages between displays
13. TUV Certified Eye Care

### Key features & message hierarchy



## Unlock learning possibilities

Samsung's WAD eboard Interactive Display offers a dynamic, engaging experience designed for the classroom of the future. Its usability and compatibility are designed to make it easy for teachers to leverage education apps and features that optimise lessons and help students discover the joy of learning.



## Boost learning experiences with familiar UX

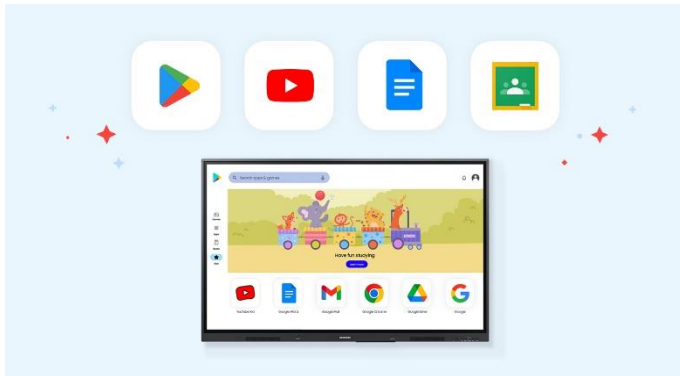
### Android™ OS

The WAD Series is an Android OS-based product, providing familiar and intuitive usability to users. Its compatibility with Android devices helps teachers boost learning experiences, while the ability to customise the home screen to suit various learning environments and needs brings flexibility and convenience.

DISCLAIMERS

\* Display UX illustrated may differ slightly from actual UX.

## Additional features & message hierarchy



### Easy access to Google services

#### EDLA Certification

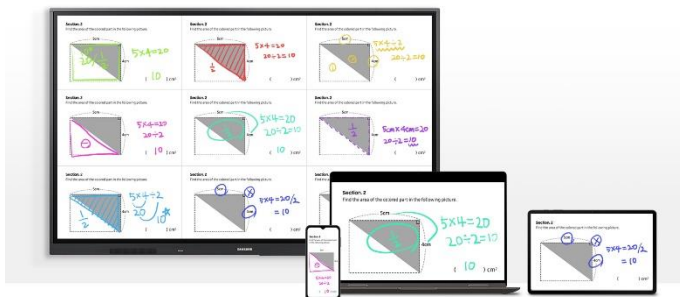
With an Enterprise Device License Agreement (EDLA) certification, the WAD Series supports a variety of Google services. Download educational apps through Google Play and use pre-installed apps like YouTube and Chrome to help increase efficiency and enhance communication with students<sup>1</sup>.

### Display multiple screens at once

#### Multi-Screen Mode



A variety of screen mode options, including split screen and multi-window, help enable teachers to easily display and read multiple windows at the same time on the WAD display. This flexibility helps educators conveniently access information they need to create an engaging learning environment.



### Smart, wireless sharing from multiple devices

#### Powerful Screen Sharing

Users can share up to nine screens simultaneously for maximum productivity in real time. This feature helps ensure students are included and engaged with content that can be shared both ways between the WAD display and individual devices. It can be used on iOS, Mac, Windows, Android, or Chrome OS<sup>2</sup>.



### Facilitate collaborative environments

#### Multi-Touch

Multiple users can write and draw on the whiteboard at the same time with the display's advanced multi-touch capabilities. Up to 40 simultaneous touchpoints are possible, helping students and teachers to collaborate and learn together in a fun and natural environment.

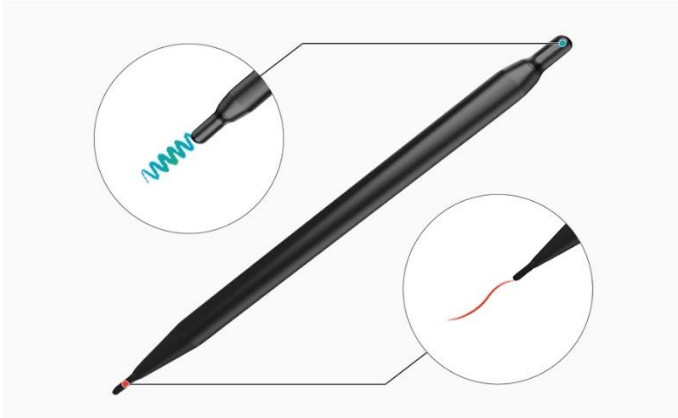
#### DISCLAIMERS

\* Display UX illustrated may differ slightly from actual UX.

1. Sign in to Google account is required for access to certain Google apps and services. App charges and fees may apply.

2. Screen sharing is available on devices with the following conditions: Windows 10 and higher / Mac OS X 10.11 and higher / Chrome 38 and higher / Android 5.1 and higher / iOS 10.0 and higher.

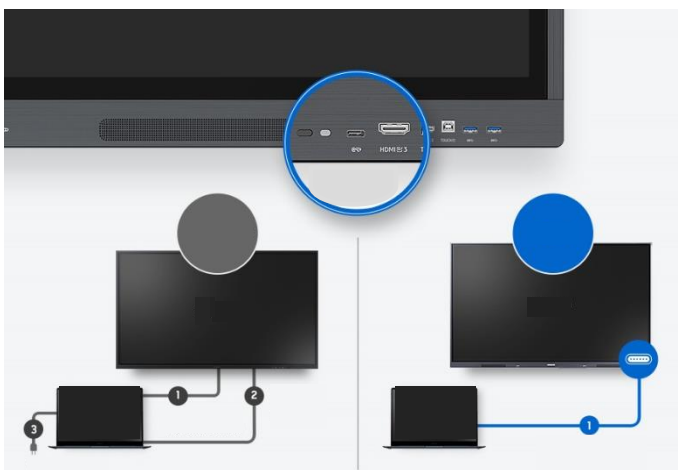
## Additional features & message hierarchy



### Switch colours without changing settings

#### Dual Pen

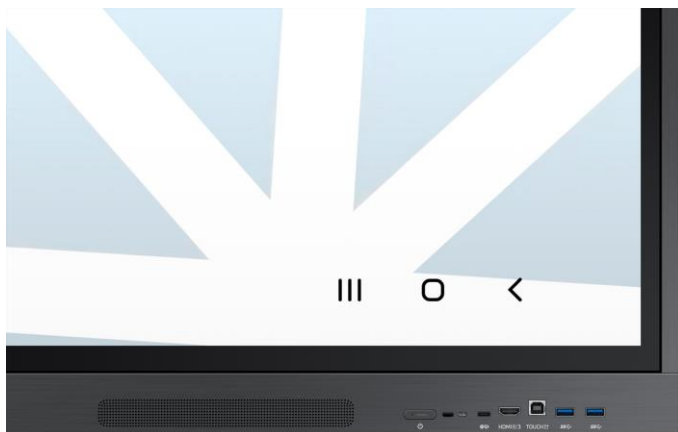
Switch between different colours and pen styles with the dual pen function. Thanks to the double-sided nib applied, users can switch between two different colours on the front and back side of the pen without needing to change the settings or interrupt their flow.



### Convenient connectivity with USB-C

#### 3-in-1 USB-C Port

Connectivity is enhanced with front facing 3-in-1 USB-C connectivity<sup>3</sup>, enabling screen mirroring, touch control and external device charging (max 65W). Educators can conveniently connect to the USB Type-C port, helping them to deliver lessons without hassle.



### Engage students with front facing speakers

#### 2Ch 15W Speakers

With built-in, front facing 2Ch 15W speakers, the WAD Series provides ample sound transmission, allowing educators to share different forms of content to help deliver engaging lessons.



### Accessible content for a variety of classroom sizes

#### HDMI Out Connection<sup>4</sup>

With the HDMI out function, content on the WAD Display can be shared on another screen installed in the classroom. This feature allows students to view content from the second screen, providing visibility regardless of the classroom size or where they sit, helping them stay engaged in lessons.

#### DISCLAIMERS

\* Display UX illustrated may differ slightly from actual UX.

3. When compared to Samsung's Flip WMA Series.

4. HDMI Out supports FHD/UHD 60Hz.

## Additional features & message hierarchy



### Access and share lessons from a familiar device

OPS (Open Pluggable Specification)<sup>5</sup>

The OPS slot in the WAD Series can transform the interactive display into a Windows device, eliminating the need for an extra PC or device. Users can gain access to all the features and functionalities they are familiar with from a standard computer, directly on the display.



### Virtually seamless management and efficient operations

Device Management Solution<sup>6</sup>

The WAD Series provides a remote device management solution that helps support educational environments. The cloud-based solution allows for remote maintenance and monitoring of multiple WAD display settings and applications, helping ensure operational efficiency and reliability.



### Communicate across multiple devices

Alerts and Notifications

Send important messages across campuses, classrooms and public spaces. Now, notifications, alerts and warnings can be displayed between WAD displays so students and other personnel can be reached in real time for important updates.



### Relieve eye strain with advanced eye care settings

TUV Certified Eye Care

The WAD Series is TUV-certified to help protect users' eye health. The anti-glare panel helps with visibility in bright environments and the low blue light and minimal flicker minimise eye strain to help keep students engaged for longer.

#### DISCLAIMERS

\* Display UX illustrated may differ slightly from actual UX.

5. OPS Module purchased separately.

6. The cloud-based DMS solution is provided free of charge for one year. Pricing policy policies are is subject to change. For more details, please contact your account manager. Additionally, the WAD Series provides an on-prem DMS solution, allowing customers to choose an option that best fits their local network requirements. UX/UI images are simulated for illustrative purposes. App availability and content may change without notice.

SPECIFICATIONS*				
Model		WA65D	WA75D	WA86D
Model Code		LH65WADWLGCCXY	LH75WADWLGCCXY	LH86WADWLGCCXY
Panel				
Diagonal Size		65"	75"	86"
Panel Type		Direct, 60Hz	Direct, 60Hz	Direct, 60Hz
Orientation		Landscape	Landscape	Landscape
Resolution		3,840 x 2,160	3,840 x 2,160	3,840 x 2,160
Brightness		400nit	400nit	400nit
Haze		25%	25%	25%
Contrast Ratio		1,200:1	1,200:1	1,200:1
Response Time		8ms	8ms	8ms
Operation Time		12/7	12/7	12/7
Connectivity				
INPUT	RGB	1	1	1
	Video	HDMI 3 (Rear 2, Front 1), USB C (Front), OPS	HDMI 3 (Rear 2, Front 1), USB C (Front), OPS	HDMI 3 (Rear 2, Front 1), USB C (Front), OPS
	Audio	1 (Stereo Mini Jack)	1 (Stereo Mini Jack)	1 (Stereo Mini Jack)
	USB	5 (2.0 x1, 3.0 x4)	5 (2.0 x1, 3.0 x4)	5 (2.0 x1, 3.0 x4)
OUTPUT	Video	HDMI Out (Rear)	HDMI Out (Rear)	HDMI Out (Rear)
	Audio	1 (Stereo Mini Jack)	1 (Stereo Mini Jack)	1 (Stereo Mini Jack)
	Touch Out	Touch Out 2 (Front 1, Rear 1)	Touch Out 2 (Front 1, Rear 1)	Touch Out 2 (Front 1, Rear 1)
Internal Sensor		Eco Sensor	Eco Sensor	Eco Sensor
External Control		Touch Input, RS232C In/Out, RJ45 In/Out	Touch Input, RS232C In/Out, RJ45 In/Out	Touch Input, RS232C In/Out, RJ45 In/Out
Bluetooth/Wi-Fi		Yes (Keyboard/Mouse)	Yes (Keyboard/Mouse)	Yes (Keyboard/Mouse)
Power				
Power Supply		AC100-240V, 50/60Hz	AC100-240V, 50/60Hz	AC100-240V, 50/60Hz
Power Consumption	Max	385W	385W	486W
	Typical	184.01W (IEC 62087 Measurement Standard) 132.2W (Energy Star 8.0 Standard)	169.39W (IEC 62087 Measurement Standard) 153.9W (Energy Star 8.0 Standard)	205.84W (IEC 62087 Measurement Standard) 183.55W (Energy Star 8.0 Standard)
	Sleep Mode	0.5W	0.5W	0.5W
Mechanical Spec				
Dimension (W)(H) (D)(mm)	Set	1,488 × 897 × 88	1,709 × 1,020 × 88	1,957 × 1,160 × 99
	Package	1,628 × 1,024 × 208	1,863 × 1,140 × 225	2,110 × 1,283 × 225
Weight (kg)	Set	33.9	45.5	56.5
	Package	42.9	57.6	74.3
VESA Mount		600 X 400	800 x 400	800 X 600
Features				
Key		EDLA Certified Android model (Google Play supported)	EDLA Certified Android model (Google Play supported)	EDLA Certified Android model (Google Play supported)
Speaker Type		Built-in Speaker (15W x 2CH)	Built-in Speaker (15W x 2CH)	Built-in Speaker (15W x 2CH)
Operating System		Android 13 (OS)	Android 13 (OS)	Android 13 (OS)
Security		802.1x(WPA2 Enterprise): EAP-TLS, EAP-TTLS, EAP-PEAP	802.1x(WPA2 Enterprise): EAP-TLS, EAP-TTLS, EAP-PEAP	802.1x(WPA2 Enterprise): EAP-TLS, EAP-TTLS, EAP-PEAP
H/W		Touch Overlay (IR), Front Connectivity, OPS I/F Support (w/OPS Box), Eco Sensor, WiFi/BT Module Inbox	Touch Overlay (IR), Front Connectivity, OPS I/F Support (w/OPS Box), Eco Sensor, WiFi/BT Module Inbox	Touch Overlay (IR), Front Connectivity, OPS I/F Support (w/OPS Box), Eco Sensor, WiFi/BT Module Inbox
S/W		Home UI (Multi Windows supported), Playstore, Chrome, YouTube, Google Drive, Note app, Screenshare, Finder, Advanced Messaging	Home UI (Multi Windows supported), Playstore, Chrome, YouTube, Google Drive, Note app, Screenshare, Finder, Advanced Messaging	Home UI (Multi Windows supported), Playstore, Chrome, YouTube, Google Drive, Note app, Screenshare, Finder, Advanced Messaging
Accessories		Power Cord, Remote Controller, HDMI Cable, Touch Pen (2ea, Black), USB Cable, Warranty/QSG	Power Cord, Remote Controller, HDMI Cable, Touch Pen (2ea, Black), USB Cable, Warranty/QSG	Power Cord, Remote Controller, HDMI Cable, Touch Pen (2ea, Black), USB Cable, Warranty/QSG
Optional		3rd party company stand/mount can be supported through VESA	3rd party company stand/mount can be supported through VESA	3rd party company stand/mount can be supported through VESA
Operating Condition				
Temperature		0°C~ 40°C	0°C~ 40°C	0°C~ 40°C
Relative Humidity		10~80% (Non-condensing)	10~80% (Non-condensing)	10~80% (Non-condensing)

\*Specifications may be subject to change without prior notice.